

# *Export Catalogue*



 **Farmacare<sup>®</sup>**

*Special products for special needs*



## The History

*Founded in 1994, Farmacare® S.r.l. is owned and managed by an important consolidated Italian group of companies, founded in 1930 and specifically in the field of hospital medical devices.*

*The group has exclusive distribution in Italy for a wide variety of medical products from numerous leading international manufacturers, and also exports its own medical devices to more than 40 countries, which have been designed and manufactured at its facilities.*

*International management knowledge of hospital medical devices and the emerging necessity of our market to source advanced products for homecare patients are what creates the base for the Farmacare® model.*

*Farmacare® incorporates its knowledge with market needs, and transforms these into innovative personalised homecare products of high quality which are distributed to the public through pharmacies and para-pharmacies.*

*Most of the products included in this catalogue are supplied in packaging with instructions including English; others are multi-language and some are only in Italian.*

*Other languages are possible for packaging, provided that minimum quantities, that vary from product to product, are reached.*

*If not expressly specified, quotations will be offered in original sales packaging without personalisation.*



|  |   |
|--|---|
| <b>CERTIFICATO</b>   |    |
|  | Reg. Numero 3790 - M Valido da 2018-06-18   |
|  | Primo rilascio 2003-06-19 Ultima modifica 2018-06-18  |
|  | Scadenza 2021-06-18   |
| <b>Certificato del Sistema di Gestione per la Qualità<br/>ISO 13485:2016</b>   |   |
| Si dichiara che il Sistema di Gestione per la Qualità dell'Organizzazione:<br><b>FARMACARE S.r.l.</b>  |   |
| è conforme alla norma UNI CEI EN ISO 13485:2016 per i seguenti prodotti/servizi:<br>Commercializzazione di dispositivi medici<br>Immissione in commercio a proprio marchio di dispositivi medici di classe I<br>Immissione in commercio a proprio marchio e commercializzazione di<br>contenitori per campioni per diagnosi in vitro (IVD) |   |
| Chief Operating Officer<br>Giampiero Belcredi<br>   |   |
| Il mantenimento della certificazione è soggetto a sorveglianza annuale e subordinato al rispetto dei requisiti contrattuali di Kiwa Cermet Italia.   |   |
| Riferirsi al manuale qualità per i dettagli delle esclusioni ai requisiti della norma UNI CEI EN ISO 13485:2016.   |   |
| Il presente certificato è costituito da 1 pagina.  |   |
| <small>Kiwa Cermet Italia S.p.A.<br/>Società con socio unico,<br/>soggetta all'attività di<br/>direzione e coordinamento di<br/>Kiwa Italia Holding Srl<br/>Via Cadriano, 23<br/>40057 Granarolo dell'Emilia<br/>(BO)<br/>Tel +39 051 459.3.111<br/>Fax +39 051 763.382<br/>E-mail: info@kiwacermet.it<br/>www.kiwacermet.it</small>       | <small><b>FARMACARE S.r.l.</b><br/><b>Sede Legale</b><br/>- Via Gramsci 8, 10, 12, 14 40018 San Pietro in Casale (BO) Italia<br/><b>Sedi oggetto di certificazione</b><br/>- Via Gramsci 8, 10, 12, 14 40018 San Pietro in Casale (BO) Italia</small>       |
|   |    |

# Index



|  |       |   |       |
|--|-------|---|-------|
| ANKLE SUPPORT FARMAELASTIC                     | 30    | INSTANT ICE                                 | 28    |
| ANTI-DUST MITE LINE PILLOW AND MATTRESS COVERS | 16    | INCONTINENCE PANTS: SUPER / STANDARD        | 17    |
| ANTI-DECUBITUS ELBOW/HEEL PROTECTOR            | 18    | ISOTHERMIC BLANKET GOLD/SILVER              | 29    |
| ANTI-DECUBITUS FLEECE                          | 18    | KINESIOTAPING FARMACARE                     | 05    |
| ANTITHROMBOSIS STOCKING - THIGH MODEL          | 31    | KNEE SOCK FARMAELASTIC                      | 30    |
| ARM SLING                                      | 27    | KNEE SUPPORT FARMAELASTIC                   | 30    |
| BANDAGE  | 4-6   | MASKS (DISPOSABLE)                          | 23    |
| BIB (DISPOSABLE)                               | 23    | MATTRESS COVERS FARMABED - WATERPROOF       | 16    |
| BRIEF (DISPOSABLE)                             | 22    | MENSTRUAL CUP - FARMACUP                    | 01    |
| CANADIAN CANE LIGHTWEIGHT METAL ADULT'S        | 10    | MENSTRUAL CUP KIT - FARMACUP KIT            | 02    |
| CANNULA (SILICONE NEONATAL RECTAL)             | 33    | MITTEN (SOAPY)                              | 25    |
| CANNULA SUPPORT COLLAR FOR TRACHEOSTOMY        | 34    | MITTEN (NON-SOAPED)                         | 26    |
| CAP (DISPOSABLE)                               | 24    | NIPPLE GUARDS - FARMANIPPLE SILICONE        | 33    |
| CAST COVER SHOE                                | 09    | ORAL CLEANING STICKS                        | 24    |
| CAST SAVER                                     | 21    | PATIENT PAJAMAS UNISEX                      | 24    |
| CATHETER - FARMACONDOM (EXTERNAL MALE)         | 19    | PESSARY (SILICONE LATEX FREE)               | 02    |
| CERVICAL COLLARS                               | 10    | PILLOWS - FARMADREAM                        | 35    |
| COSMETICS LINE (CREME - MOUSSE DETERGENT)      | 03    | PHONENDOSCOPE                               | 15    |
| CUSHIONS - WITH HOLE AND RING SHAPE            | 20    | PROTECTORS (ELBOW/HEEL)                     | 18    |
| CUTLERY FOR DISABLED (ERGONOMIC)               | 38    | RUBBER WATERPROOF SHEET                     | 16    |
| DISPOSABLE ITEMS                               | 22-24 | REHABILITATION OF THE HAND - MANUS ABILIS   | 14    |
| DISPOSABLE GLOVES                              | 08    | REFRIGERATOR BAG FOR DIABETIC KIT           | 36    |
| DISPOSABLE MITTEN                              | 25    | REMOVER SPRAY                               | 38    |
| ELBOW/HEEL PROTECTORS                          | 18    | SHEET (RUBBER WATERPROOF)                   | 16    |
| ELECTRO-CONDUCTIVE GEL                         | 32    | SHOES (POST-OPERATIVE) - BARUK - FLAT/RIGID | 09    |
| ENEMA SIMPLEX                                  | 33    | SHOE COVERS                                 | 23    |
| EXTERNAL MALE CATHETER - FARMACONDOM           | 19    | ¾ SILICONE INSOLE WITH CUSHION              | 11    |
| FACE MASKS                                     | 23    | SILICONE NEONATAL RECTAL CANNULA            | 33    |
| FANNY PACK FOR CAMPERS/TREKKERS                | 29    | SIMPLEX ENEMA                               | 33    |
| FINGER PROTECTOR - CURVED OR STRAIGHT          | 29    | SINGLE SOLUTION WITH HYALURONIC ACID        | 32    |
| FINGER SPLINTS - FARMASPLINT for fractures     | 27    | SKINPROTECTOR PRE-TAPE - SALVAPELLE         | 04    |
| FLEECE (ANTI-DECUBITUS)                        | 18    | SPHYGMOMANOMETER                            | 14    |
| GEL (ELECTRO-CONDUCTIVE - ULTRASOUND)          | 32    | SPONGE (NATURAL SEA)                        | 26    |
| GLOVES   | 07-08 | STETHOSCOPE                                 | 15    |
| GOWN (VISITOR'S)                               | 22    | STOMA COVER LINE (BIBS - COLLARS - SCARVES) | 34    |
| HEATING PADS                                   | 36    | SUPPORT COLLAR                              | 10    |
| HEEL CUSHION SILICONE-PLUS                     | 11    | SUSPENSORY BRIEF                            | 13    |
| HEEL/ELBOW PROTECTORS                          | 18    | TAPING - FARMATAPING                        | 04    |
| HERNIA TRUSS                                   | 12    | TICKS REMOVER                               | 37    |
| HERNIA BRIEF WITH PRESSURE PADS                | 13    | TOILET SEAT EXTENTION                       | 21-22 |
| HOT WATER BOTTLE PLUS - BS STANDARD            | 36    | ULTRASOUND GEL                              | 32    |
| ICE BAG  | 28    | URINE BAG WITH DRAIN                        | 19    |
| ICE SPRAY                                      | 28    | VISITOR'S GOWN                              | 22    |
| INSOLE ¾ SILICONE WITH CUSHION                 | 11    |   |       |

# FarmaCup



FarmaCup is folded easily because it is very soft. Easy to insert.



Reusable after simple rising.



FarmaCup is positioned lower than a traditional tampon.

Is FarmaCup adapt for all women?  
Yes, it is. It also adapts under numerous circumstances:  
for those who practice sports (swimming included)  
and for those who are away from the home for many hours (for work or travel), or who are sensitive to protecting the environment and are careful regarding the family budget.

FarmaCup is ideal for all young, modern and practical women.

*Eco friendly*



# Menstrual Cup



## FARMACUP MENSTRUAL

FarmaCup is a safe, ecological and practical alternative to traditional internally used absorbent tampons.

It respects both your body and the environment because it is hypoallergenic and reusable.

It is very economic when compared to traditional tampons and respects the environment.

FarmaCup is easy to use on any occasion, both during the day or at night, while travelling or when involved in sports activities. It is manufactured in soft, 100% platinum cured medical silicone.

Instead of absorbing the menstrual flow, it collects it, respecting the natural equilibrium of your body.

| Code      | Description         |
|-----------|---------------------|
| 923507673 | FarmaCup SMALL size |
| 923507685 | FarmaCup LARGE size |

Does not contain latex, phthalates or substances of animal origin (BSE-TSE), nor colorings, perfumes or dangerous chemical substances.  
Conforms to standards: FDA - USP CLASS VI ISO 10993 - ROHS - REACH

| Children/Pregnancies                    | Less than 30 years | Over 30 years |
|---|--------------------|---------------|
| I have not had children                 | Small              | Large         |
| I have had children with natural birth  | Large              | Large         |
| I have had children by Cesarean section | Small              | Large         |

Two sizes which are adapt for every type of woman.

**Modern alternative to traditional internally used tampons.**

**Hypo-allergenic  
Re-usable menstrual cup.**



*Export Catalogue*

## SILICONE LATEX FREE PESSARY

Made of biocompatible platinum cured Medical Grade **SILICONE**.  
Transparent color.  
Latex and phthalate free.

When prescribed and positioned by competent medical personnel, this device is indicated to contain uterine prolapse.  
The characteristics of the special quality of silicone used make the device: biocompatible, water repellent and hypo-allergenic, guaranteeing the "long term" use in situ (more than 30 days).  
To ensure a practical and safe positioning, the device is supplied **STERILE**.



| Code      | Description    |
|-----------|----------------|
| 930244734 | Ø ext. 60 mms. |
| 930244761 | Ø ext. 65 mms. |
| 930244785 | Ø ext. 70 mms. |
| 930244797 | Ø ext. 75 mms. |
| 930244811 | Ø ext. 80 mms. |
| 930244823 | Ø ext. 85 mms. |
| 930244672 | Ø ext. 90 mms. |



## FARMACUP KIT

**FarmaCup Kit** includes everything necessary to get the best use out of your menstrual cup. The practical and discreet kit bag contains everything necessary to insert, empty, store, transport and hygienize your menstrual cup while travelling, when away from home for any reason (work, sports, free time, etc.) and also when at home.

**Contents:** 1 FarmaCup Menstrual Cup (size Small or Large); 10 special high sensitivity disposable, non-sterile single gloves, elastic and resistant, packaged singularly on a medical paper support page for disposal use; 1 silicone Cleaner Cup for sterilization, 170 ml capacity, folding and with lid to seal; 1 packet of disposable cotton wipes; 1 kit bag with zipper closure.

*Using the FarmaCup is today even easier thanks to the convenient travel Kit which is complete with everything needed to best manage your menstrual cup (at home or away from home) with the maximum safety and hygiene. Choose your size and feel free in any situation.*



| Code      | Description          |
|-----------|----------------------|
| 970396255 | FarmaCup Kit - SMALL |
| 970396267 | Farmacup Kit - LARGE |

| Code      | Description |
|-----------|-------------|
| 970486561 | Cleaner Cup |

*Advanced cosmetics in Pharmacy*



### Face & Body



#### Non-rinse Mousse detergent

Delicate base wash  
without soap - ml. 125  
Code 974347989

Delicate Base wash without soap.  
Extremely delicate Mousse, formulated  
to cleanse the skin while respecting the  
skin's physiological equilibrium.

#### Revitalizing creme

Skin creme for specific zones - ml. 50  
Code 974347977

A rich creme made of functional  
ingredients of natural origin, formulated  
with a synergy of ingredients of natural  
origin contributes to the revitalization of  
skin under stress from various sources,  
softening the keratin and increasing  
moisturization and elasticity.



#### Protective Cream

Creme for specific zones - ml. 50  
Code 974347991

Ultra-delicate emulsion recommended for protection and to help  
maintain natural moisturization of the skin, toning down unpleasant  
sensations caused by external aggressors. Thanks to a synergy studied  
specifically with ingredients of natural origin, it promotes immediate comfort.

### Body & Feet

#### Urea Creme 20%

Emulsion for dry skin  
with Urea - ml. 100  
Code 974347433



Creme with 20% urea, with its kerato-plastic action, modulates moisturization  
and the elasticity of keratin. Assists excessively dry skin, with callosity,  
thickening and desquamation, to recover its natural soft and moisturized  
equilibrium. It is particularly recommended for extremely dry skin on feet,  
but also for elbows or knees, in unpleasant situations that can occur  
following treatments with drugs. It is rapidly absorbing and does not  
leave oily residues behind.

THE EVER MORE POPULAR DESIRE TO AVOID INTERRUPTING ONE'S OWN DAILY BEAUTY ROUTINE EVEN DURING A GRAVE ILLNESS OR PERIOD  
OF HEALTH FRAGILITY ARE WHAT HAVE DRIVEN US TO THE DEVELOPMENT OF THE FARMACARE LINE OF COSMETICS.

The products conform to European regulation 1223/2009.

## FARMAZINK PRE-ROLLED ZINC TREATED BANDAGES



Pre-rolled zinc treated bandages available in elastic or non-elastic types in various sizes.  
Available in single packaging and hospital packs of 10 pcs.

### Composition:

Farmazink Rigid bandage

100% Viscose

Farmazink Elastic bandage

31% Polyamide

69% Viscose.



### Intended use:

*Sustaining bandage for leg ulcers, varicose veins, thrombosis and post-operative treatment of fractures, strains, sprains and operations on bones and/or limbs. The elastic type allows for greater compression. Consult your doctor before use and read instructions attentively.*

| Code      | Description                   |
|-----------|-------------------------------|
| 930244874 | Elastic 10 cms. x 5 mts.      |
| 930244898 | Elastic 10 cms. x 10 mts.     |
| 930244900 | Non-Elastic 10 cms. x 5 mts.  |
| 930244912 | Non-Elastic 10 cms. x 10 mts. |

## FARMATAPING FUNCTIONAL BANDAGE



Non-elastic adhesive bandage for functional bandaging (Taping). Made of a high resistance cotton textile support and special hypo-allergenic synthetic adhesive with a high percentage of zinc oxide (greater than 20% dry based) for an efficient anti-swelling effect. While it offers high traction resistance, it is easy to tear with fingers which allows the user quick and easy dexterity. Besides the use for functional bandaging, it is successfully used for generic orthopedic immobilization as well as to hold Kramer or other types of splints.



| Code      | Description               | Code      | Description               |
|-----------|---------------------------|-----------|---------------------------|
| 902520978 | 3,8 cms. x 10 mt. (2 pcs) | 925466409 | 3,8 cms. x 10 mt. (12pcs) |
| 902536996 | 5 cms. x 10 mt. (2 pcs)   | 925466498 | 5 cms. x 10 mt. (6 pcs)   |

## SKINPROTECTOR PRE-TAPE - SKINSAVER

*Skin protector pre-tape for underwrapping*

Made of polyurethane foam. Absorbs humidity when applied under casts or under synthetic insulating material for rigid bandages. The Skin protector pre-tape is a thin, resistant film that permits stable and safe applications. Yellow color. Non-sterile.

### Intended use:

*Sports Medicine, phlebology and orthopedics*

*To protect the skin from adhesive and function taping bandages; allows easy removal of the taping bandage without pain.*

*To hold insulating materials in place.*



| Code      | Description |
|-----------|-------------|
| 923507659 | box 2 rolls |

## KINESIOTAPING FARMACARE

*Intended use: Adhesive Bandage for kinesiology for the treatment of pain using the most current physiotherapy technology. Studied to treat specific skin layers and muscle tissues. It acts locally to treat muscle pain and inflammation.*

Composition: Textile Tape: 97% cotton – 3% Spandex.

Adhesive: Ethyl Acetate 55-65% - Acrylic Polymer 35-45%

Adhesive: Hypoallergenic and Biocompatible.

Water Resistant - Long Lasting - Latex Free – Biocompatible.

Adhesive - Non-sterile and cannot be sterilized – Disposable.

Technical characteristics: Role length: 5 meters. Tape Width: 5 cms.

Easy to apply and adaptable to all limbs.

Primary Packaging: Convenient dispenser to facilitate length cutting and correct storage. Multi-language Instructions for use.



| Code      | Description             | Code      | Description           |
|-----------|-------------------------|-----------|-----------------------|
| 970287304 | Fuschia 5 cms. x 5 mts. | 970278394 | Beige 5 cms. x 5 mts. |
| 970287292 | Yellow 5 cms. x 5 mts.  | 970278406 | Blue 5 cms. x 5 mts.  |
|           |                         | 972757292 | Black 5 cms. x 5 mts. |

## FARMA-FORTE COMPRESSION BANDAGE

The FARMA-FORTE BANDAGE is a compression and unidirectional stretch bandage that permanently maintains its elastic properties. The compression effect can be regulated by the application technique according to the specific use required. The material allows the skin to breathe. It is re-useable and washable. Composition: 93% cotton – 7% polyurethane.

*Intended use: Super-elastic compression bandage intended to offer support in cases of muscle strains, bruises and dislocations. Efficient for compression and support applications. Indicated for compression treatments in phlebology, orthopedics and functional bandages.*

*Packaged in a box containing one bandage, two metal hooks for fixation and a bilingual (Italian/English) insert with instructions for use.*

| Code      | Description     |
|-----------|-----------------|
| 926830670 | 8 cms. x 7 mt.  |
| 926830694 | 10 cms. x 7 mt. |
| 926830706 | 12 cms. x 7 mt. |



## FARMAGRIP ELASTIC TUBULAR BANDAGE

85% Cotton-7.5% Natural Rubber-7.5% Polyester-Tubular elastic (elastomer) sock. Particularly indicated when an efficient support and compression are required. Designed for the prevention and therapy of hypertrophic scars, it is also very efficient in a wide range of treatments such as strains, sprains, trauma of soft tissues, swelling, bruises, and limb disorders. Length 1 mt.

*Application is simple, practical and fast. Does not require anchoring so can easily be applied and removed by the user for hygiene procedures.*

*It is used efficiently as a cover bandage for compression therapy for varicose vein treatments, as it may increase the compression of the underlying bandage if required.*



| Code      | Size/cm. | Applications            | Code      | Size/cm. | Applications         |
|-----------|----------|-------------------------|-----------|----------|----------------------|
| 904348481 | B - 6,25 | Hand or small limb      | 904348543 | E - 8,75 | Thin leg and thigh   |
| 904348517 | C - 6,75 | Adult hand, arm or limb | 904348556 | F - 10,0 | Large thigh and knee |
| 904348529 | D - 7,50 | Large arm and leg       | 904348570 | G - 12,0 | Large thigh          |

## FARMA-HAFT SELF ADHESIVE BANDAGE

Self adhesive elastic bandage with cohesive effect on both sides for the purpose of applying compresses for medication, unguents, cannulas, etc. Extension capacity: 100%. Non sterile, disposable. The high elasticity, even with prolonged use, and the wrinkled structure, guarantee easy application and make the bandage ideal also for medications over large surfaces, in correspondence with limbs and conical anatomical areas which are particularly difficult. Contains Latex.

| Code      | Description |
|-----------|-------------|
| 925852547 | 6 x 4 mts.  |
| 925852550 | 8 x 4 mts.  |
| 925852562 | 10 x 4 mts. |

*Intended use:*

*Self adhesive elastic bandage with cohesive effect on both sides for the purpose of applying compresses for medication, unguents, cannulas, etc.*



## ELASTIC BANDAGE

For support bandaging and to treat strains, sprains and bruises. Standard elasticity. One-way elasticity. Light, does not impede movement. Color: white. Composition: 65% cotton; 35% polyamide. Dimensions when pulled: 4,5 mts.

| Code      | Description   | Code      | Description    |
|-----------|---------------|-----------|----------------|
| 908818204 | height 5 cms. | 908818242 | height 10 cms. |
| 908818228 | height 7 cms. | 908818267 | height 12 cms. |
| 908818230 | height 8 cms. | 908818279 | height 15 cms. |



## SEWN BORDER EAR BANDAGE

Produced in conformity with the standards of the Official Pharmacy of the Italian Republic IX edit. (FU IX) and the Official European Pharmacy (FUE), In conformity with the requisites established by the CE Directive 93/42 for Class I - Medical Products.

| Code      | Description                     |
|-----------|---------------------------------|
| 908819016 | Ear hem bandage 5 mts. x 1 cms. |
| 908819028 | Ear hem bandage 5 mts. x 2 cms. |



## SEWN BORDER BANDAGE

Produced in conformity with the standards of the Official Pharmacy of the Italian Republic IX edit. (FU IX) and the Official European Pharmacy (FUE), In conformity with the requisites established by the CE Directive 93/42 for Class I - Medical Products.

| Code      | Description                          |
|-----------|--------------------------------------|
| 908818343 | hem bandage 12/12 x 5 mts. x 5 cms.  |
| 908818356 | hem bandage 12/12 x 5 mts. x 7 cms.  |
| 908818368 | hem bandage 12/12 x 5 mts. x 10 cms. |



## FARMAGLOVE® - LATEX

Single use latex gloves for exploration/examination.

Characteristics: Single use natural latex gloves, non-sterile, ambidextrous.

Sensitivity and strength. AQL 1,5. Finely dusted with vegetable starch.

Wrist with rolled border. Adapt for use in the hospital, doctors office and for medication.

Recommended for use also in the laboratory.

Composition:

The composition material of the gloves is natural latex rubber.

Finely dusted with vegetable starch (corn starch).

Dispenser box of 100 pcs.



| Code      | Size   |
|-----------|--------|
| 909069623 | SMALL  |
| 909069635 | MEDIUM |
| 909069647 | LARGE  |

## VINYL STRETCH GLOVES - POWDER FREE

Single use synthetic vinyl elastic glove, free of natural rubber, white opaque color, ambidextrous with edge, without lubricating powder. Smooth internal and external finish. The device guarantees high elasticity and fit.

Chemical resistance to chemical substances and micro-organisms.

Highly bio-compatible polyvinylchloride + polyester.

AQL < 1.5 (by absence of holes); White color.

Dispenser box of 100 pcs.

| Code      | Size        |
|-----------|-------------|
| 978973497 | SMALL       |
| 978973535 | MEDIUM      |
| 978973550 | LARGE       |
| 978973586 | EXTRA LARGE |



## NITRILE BLACK GLOVES - POWDER FREE

Classification: Personal Protection Equipment (PPE), category III, for protection against chemicals and microorganisms.

Intended use: This glove is intended to protect the hands from contact with chemical, organic and synthetic substances. Highly biocompatible synthetic nitrile: particularly indicated for persons allergic to natural latex; AQL < 1.5 (due to absence of holes); Black color.

Dispenser box: 100 pcs.

| Code      | Size        |
|-----------|-------------|
| 979045402 | EXTRA SMALL |
| 979045414 | SMALL       |
| 979045426 | MEDIUM      |
| 979045438 | LARGE       |
| 979045440 | EXTRA LARGE |



## LIGHT NITRILE GLOVES - POWDER FREE

Intended use: Classification as a Medical Device makes the product adapt for the following uses: examination; diagnostics; therapy; laboratory.

Classification as a DPI, makes the product adapt for the following uses: protection of the user in analysis laboratories, biology, cosmetics, etc.

Dispenser box: 100 pcs.

| Code      | Size        |
|-----------|-------------|
| 979045352 | EXTRA SMALL |
| 979045364 | SMALL       |
| 979045376 | MEDIUM      |
| 979045388 | LARGE       |
| 979045390 | EXTRA LARGE |



## FARMAGLOVE® - NITRILE POWDER FREE

Characteristics: Disposable nitrile gloves, non-sterile, ambidextrous. High sensitivity and strength. AQL 1,5. The micro-rough surface at the fingertips assures an optimum grip. Rolled border wrist. Powder free. Indicated for sensitive skin. Adapt for use in the hospital, doctor's office and for medication. Also recommended for laboratory use. Does not cause allergies, highly resistant to tension and abrasions, non slip and practical for use on wet objects, excellent resistance to chemical agents, fats, oils, solvents, alkaline solutions, and chemotherapy drugs.

Composition: The composition material of the gloves is nitrile. Totally without starch.

Packaging: Dispenser box of 100 pcs.



| Code      | Size   |
|-----------|--------|
| 900415718 | SMALL  |
| 900415744 | MEDIUM |
| 900415769 | LARGE  |

## DISPOSABLE ONE-SIZE-FITS-ALL GLOVES

Made of HDPE - Non sterile - Ambidextrous  
Unpowdered - Transparent - One size fits all  
Package 100pcs. For every type of use that requires sensitivity and protection.

| Code      |
|-----------|
| 909140170 |



## COTTON SANITARY GLOVES

Cotton sanitary gloves for autonomous use under latex gloves, for surgery or to reduce the possibility of sensitizing reactions or skin irritations. Made of 100% pure cotton without seams and with elastic cuffs.

| Code      | Description | Code      | Description |
|-----------|-------------|-----------|-------------|
| 909070955 | Size 6 ½    | 909070981 | Size 8      |
| 909070967 | Size 7      | 909070993 | Size 8 ½    |
| 909070979 | Size 7 ½    | 909915100 | Size 9      |



## FARMACARE® COTTON GLOVES

Variety of uses – Ambidextrous – Knit without seams  
Elastic wrist  
Pure cotton 100% - Non sterile.

| Code      | Description | Code      | Description |
|-----------|-------------|-----------|-------------|
| 905301192 | Size 6 ½    | 905301230 | Size 8      |
| 905301216 | Size 7      | 905301232 | Size 8 ½    |
| 905301228 | Size 7 ½    | 905301267 | Size 9      |



## POST-OPERATIVE BARUK SHOE - 1 PC.

*Intended use: This device is designed to facilitate deambulation post-operatively, for post trauma, swollen feet, when it is not possible to wear normal footwear.*

Characteristics: Ambidextrous - Blue color - Angled sole to discharge body weight from the front foot - Wide fit can contain a bandaged foot - Adjustable straps to open/close - Comfortable wraparound reinforcement at the back of the foot - Non-slip sole.

Composition: External sole: EVA - Rubber

Internal sole: Polyurethane - Polyester - Cardboard

Textile: Polyester - Nabouk



| Code      | Size    | Code      | Size    |
|-----------|---------|-----------|---------|
| 939289512 | 35 - 36 | 905818757 | 41 - 42 |
| 905818732 | 37 - 38 | 939289664 | 43 - 44 |
| 905818744 | 39 - 40 | 939290021 | 45 - 46 |

## POST-OPERATIVE FLAT/RIGID SOLE SHOE - 1 PC.

*Intended use: this device is designed to facilitate deambulation post-operatively, when an inclined sole is not expressly requested (Baruk Shoe). Also indicated for post trauma, swollen feet, when it is not possible to wear normal footwear.*

Characteristics: ambidextrous - black color - flat and rigid - completely opening upper shoe - adjustable straps to open/close to facilitate foot insertion - wide upper shoe and sole to contain a bandaged foot. Composition: external sole: thermoplastic rubber internal sole: EVA - Textile: 100% Polyester



| Code      | Size    | Code      | Size    |
|-----------|---------|-----------|---------|
| 971302967 | 35 - 36 | 971303058 | 41 - 42 |
| 971303033 | 37 - 38 | 971303060 | 43 - 44 |
| 971303045 | 39 - 40 | 971303072 | 45 - 46 |

## CAST COVER SHOE

*Indications for use: Protection of cast bandages.*

Characteristics: Vulcanized sole - Quick and easy Velcro® closure - Double sizes - Ambidextrous - Washable. Available by corresponding shoe size (the volume of the cast has already been considered).

Materials:

*Jeans textile model:* upper made of cotton jeans textile; pre-formed and reinforced cardboard internal sole with polypropylene base; PVC injection molded sole, hook and loop fastener closures.

*Black leatherette model:* upper made of black leatherette textile; pre-formed and reinforced cardboard internal sole with polypropylene base; PVC injection molded sole, hook and loop fastener closures.

*Jeans model:*

| Code      | Size    |
|-----------|---------|
| 902091572 | 37 - 38 |
| 902091584 | 39 - 40 |
| 902091596 | 41 - 42 |
| 902091610 | 43 - 44 |
| 902091622 | 45 - 46 |



*Faux leather model:*

| Code      | Size    |
|-----------|---------|
| 902100864 | 37 - 38 |
| 902091646 | 39 - 40 |
| 902091659 | 41 - 42 |
| 902091661 | 43 - 44 |
| 902091634 | 45 - 46 |



## SOFT CERVICAL NECK COLLAR

For cervical neck arthritis, “whiplash”, stiff neck and cervical neck pain in general. Made of foam memory material for better support. External lining made of 100% pure cotton jersey, easy to wash, hypo-allergenic and strong. Adjustable circumference by rear hook and loop fastener.



| Code      | Size   | Ø       |
|-----------|--------|---------|
| 909302438 | Small  | 38 cms. |
| 909302440 | Medium | 45 cms. |
| 909302453 | Large  | 50 cms. |

Maximum height: 10 cms.

## SEMI-RIGID CERVICAL NECK COLLAR

For cervical neck arthritis, “whiplash”, stiff neck and cervical neck pain in general. Made of foam memory material for better support. The support is made of polycarbonate (does not shatter), sewn at the edges to avoid damaging the soft part. External lining made of 100% pure cotton jersey, easy to wash, hypo-allergenic and strong. Adjustable circumference by rear hook and loop fastener.



| Code      | Size   | Ø       |
|-----------|--------|---------|
| 902288620 | Small  | 38 cms. |
| 902288632 | Medium | 45 cms. |
| 902288644 | Large  | 50 cms. |

Maximum height: 10 cms.

## SUPPORT COLLAR

For cervical neck arthritis, “whiplash”, stiff neck and cervical neck pain in general. The rigid surface is made of polyethylene with a thickness of 1.5 mms. to offer increased support. Resting support (top and bottom) made of hypo-allergenic, non-toxic synthetic leather, with particular form for maximum comfort. The upper lining is found over the entire length to protect the back of the neck.

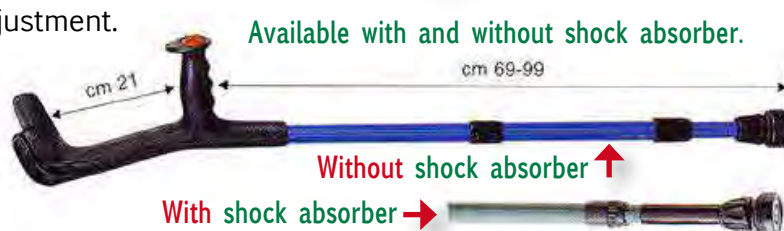


| Code      | Size         | Ø       |
|-----------|--------------|---------|
| 909301602 | 9÷11 cms.    | 32 cms. |
| 909301614 | 10÷12,5 cms. | 38 cms. |
| 909302150 | 10,5÷13 cms. | 45 cms. |
| 909302162 | 11,5÷14 cms. | 57 cms. |

Adjustable height and circumference by rear hook and loop fastener closures (50 mms height) which guarantee stability after positioning.

## LIGHTWEIGHT METAL ADULT'S CANADIAN CANE

Adult canadian cane with double adjustment. Made of anodized aluminium. Anatomic anti-slip grip. Single or double packaged. Maximum weight capacity 130 kgs.



| Code      | Description  | Color                                 | Weight     |
|-----------|--|---------------------------------------|------------|
| 904183290 | Alluminium cane body without shock absorber (non coated) 1 pc.                   | Green (hand grip)                     | 1.04 kgs.  |
| 909295317 | Metallic alluminium cane body without shock absorber (light coated alloy) 2 pcs. | Dark grey (cane)<br>Black (hand grip) | 1.04 kgs.  |
| 909295305 | Metallic cane body with shock absorber (light coated alloy) 2 pcs.               | Blue (cane)<br>Blue (hand grip)       | 1.190 kgs. |
| 904254543 | Alluminium cane body with shock absorber (non coated) 1 pc.                      | Black (hand grip)                     | 1.190 kgs. |

## SILICONE-PLUS HEEL CUSHIONS

Made of non-toxic medical grade silicone made with a platinum base.  
Adaptable to any type of footwear.  
Optimum foot stability.  
Does not absorb odours.  
Easy to wash.  
Elastic and resistant.  
Ideal for use during sports.

Silicone-Plus Heel Cushions are indicated for relief and to protect the feet, ligaments and bones from bumps and trauma; ideal for use during sports and in the treatment of heel problems, tendonitis, recovery from fractures and micro-fractures, heel spurs.

The model with cushion, which has a softer silicone center is particularly indicated for inflammation of the Achille's tendon and heel spurs.



| MODEL Description          | SIZE S<br>(Shoe size 34-37) | SIZE M<br>(Shoe size 38-41) | SIZE L<br>(Shoe size 42-43) | SIZE XL<br>(Shoe size 44-45) |
|----------------------------|-----------------------------|-----------------------------|-----------------------------|------------------------------|
| Flat with down flap (1)    | 938103710                   | 938103975                   | 938103722                   | ---                          |
| Cupped without cushion (2) | 938104041                   | 938104229                   | 938104522                   | 938104597                    |
| Cupped with cushion (3)    | 938104662                   | 938103607                   | 938104989                   | 938103569                    |



## ¾ SILICONE INSOLE WITH CUSHION - 2 PCS.



Made of non-toxic silicone via a platinum based catalyzation process; adaptable to any type of footwear, preferably with laces; optimum foot stability; does not absorb odours; easy to wash; elastic and wear resistant. Indicated for those who suffer from heel strikes, tendonitis, heel spurs, plantar fasciitis. Ideal to prevent: micro-trauma and/or overload pathologies; to treat post fracture and micro fracture after effects; to prevent diabetic foot problems. The material has optimum absorbent capacity against shocks and vibrations from strong mechanical impact at the plantar fascia zone, protecting the area from potential trauma. The flexibility of the material does not alter deambulation. Latex free. The insoles are manufactured with silicone of varied hardness.



| Code      | Size    | Code      | Size    |
|-----------|---------|-----------|---------|
| 906635661 | 35 - 36 | 906635685 | 41 - 42 |
| 902288669 | 37 - 38 | 906635697 | 43 - 44 |
| 902288671 | 39 - 40 | 906635711 | 45 - 46 |



## HERNIA TRUSS

The device is intended to contain a simple mono-lateral or bi-lateral inguinal hernia. Containment is achieved by the inguinal pads.

Particularly indicated for hernias under particular exertion (work, sports).

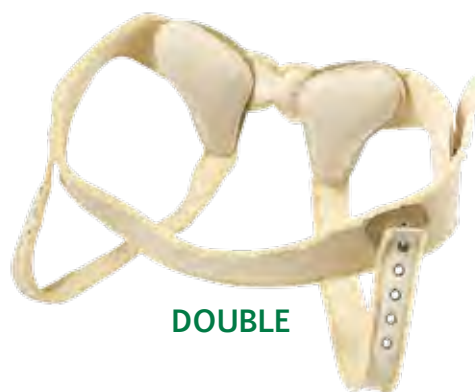
Ecru color.  
Contains Latex.

Belt composition: 75% Cotton – 25% Elastam  
Pad covering: 86% Polyester – 14% Elastam

First layer: 100% PU Film  
Second layer: MTP coupling –  
polypropylene Velcro plate  
Pad: Natural Rubber with presence of Latex;  
Metallic Buckle and hooks.



| Code      | Circumf. | DOUBLE BELT | Code      | Circumf. |
|-----------|----------|-------------|-----------|----------|
| 909818419 | 80 cms.  |             | 909818686 | 95 cms.  |
| 909818508 | 85 cms.  |             | 909818775 | 100 cms. |
| 909818597 | 90 cms.  |             | 909818864 | 105 cms. |
|           |          |             | 909818953 | 110 cms. |



DOUBLE

|           |          | SIMPLE BELT |           |          |
|-----------|----------|-------------|-----------|----------|
| Code      | Circumf. | LEFT        | Code      | Circumf. |
| 909817785 | 80 cms.  |             | 909818054 | 95 cms.  |
| 909817874 | 85 cms.  |             | 909818142 | 100 cms. |
| 909817963 | 90 cms.  |             | 909818231 | 105 cms. |
|           |          |             | 909818320 | 110 cms. |

|           |          | SIMPLE BELT |           |          |
|-----------|----------|-------------|-----------|----------|
| Code      | Circumf. | RIGHT       | Code      | Circumf. |
| 909819841 | 80 cms.  |             | 909817429 | 95 cms.  |
| 909817241 | 85 cms.  |             | 909817518 | 100 cms. |
| 909817330 | 90 cms.  |             | 909817607 | 105 cms. |
|           |          |             | 909817696 | 110 cms. |



SIMPLE

## HERNIA BRIEF WITH PRESSURE PADS



*Intended use:*

*particularly indicated for containment of inguinal and crural hernias and for post-operative use.*

Complete with pressure pads to be inserted in the bilateral pockets for greater containment.  
Non-sterile medical device,  
washable and reusable.

Available in the following sizes and codes:



| Code      | Size | Circumference |
|-----------|------|---------------|
| 909819409 | 2°   | 76-80 cms.    |
| 909819498 | 3°   | 81-85 cms.    |
| 909819587 | 4°   | 86-90 cms.    |
| 909819676 | 5°   | 91-95 cms.    |

| Code      | Size | Circumference |
|-----------|------|---------------|
| 909819765 | 6°   | 96-100 cms.   |
| 909819854 | 7°   | 101-105 cms.  |
| 909817254 | 8°   | 106-110 cms.  |



## COMFORT SUSPENSORY BRIEF

Designed to provide greater support and protection in the pelvic area, without annoying compression of the abdominal tissues.

Suitable for sports and post-operatively.

Easy to wear, free of seams;  
the 6 cm. elastic abdominal belt  
allows complete freedom of movement.

Cotton 41%, Polyamide 25%,  
Elastan 12%, Lycra 9%  
Cotton omnidirectional  
elasticity of triangular pouch.  
Color: white



| Code      | Description       |
|-----------|-------------------|
| 925605976 | S - 70-80 cms.    |
| 925605988 | M - 81-90 cms.    |
| 925605990 | L - 91-102 cms.   |
| 925606004 | XL - 103-113 cms. |



### Accessory for the rehabilitation of the hand

Designed to improve tone and agility of the muscular apparatus, improving grasping function and finger mobility. The principle functions of these accessories include flex movements and extension of the fingers and the mid arm. The completeness of form, materials and hardness help resolve specific motor requirements. Circulation of blood is enhanced and therapeutic relaxation is a result. They are made of various special polymers, and have particular elastic properties and various grades of hardness to resolve the various rehabilitative problems of the upper extremities.



| Code      | Model | Size<br>Ø mm. | Resilience | Traction<br>Resistance KPa | Zone  | Color        |
|-----------|-------|---------------|------------|----------------------------|-------|--------------|
| 909915819 | 1     | 60x90         | minimum    | 96                         | •     | Light yellow |
| 909915908 | 2     | 60x90         | low        | 165                        | • •   | Pink         |
| 909915997 | 3     | 60x90         | low        | 241                        | • • • | Blue         |
| 909916088 | 4     | 60x90         | medium     | 140                        | • • • | Dark Yellow  |
| 909916177 | 5     | 70            | medium     | 9                          | • • • | Dark Yellow  |
| 974966917 | 6     | 70            | minimum    | 4.2                        | • • • | Orange       |

## ANEROID SPHYGMOMANOMETER

Available with and without incorporated stethoscope.  
High precision sphygmomanometer, cuff with Velcro closure, rubber cushion, pump bulb with valve.  
Metal phonendoscope with double ear arch for listening.  
Bag with zip closure.



| Code      | Description                                   |
|-----------|---|
| 909071375 | Aneroid sphygmomanometer (1)                  |
| 909196949 | Aneroid sphygmomanometer with stethoscope (2) |

Spare Parts:

| Code      | Description   |
|-----------|---|
| 904743402 | Adult nylon cuff with metal D-ring and 2 tubes bladder 50x14 cms.     |
| 901011623 | Adult bladder 1 tube 12x22 cms.                                       |
| 932773144 | Teen-ager nylon cuff with metal D-ring and 2 tubes bladder 45x10 cms. |
| 904743414 | Child nylon cuff with 2 tubes bladder 38x7 cms.                       |
| 900726542 | Manometer   |
| 901069310 | Large adult nylon cuff with D-ring and 2 tubes bladder 60x17 cms.     |
| 904743426 | Latex bulb with air release valve                                     |

# SINGLE HEAD STETHOSCOPE

Phonendoscope, light, flat, with membrane and rubber ring on stethoscope.  
Double ear inserts for listening, with external spring.



| Code      |
|-----------|
| 909071401 |

Spare Parts:

| Code      | Description                                    |
|-----------|--|
| 901069385 | Y-tube for standard stethoscope - color: black |
| 900726530 | Standard stethoscope single head               |
| 900214141 | Eartips for stethoscope - 6 pcs.               |

# DOUBLE HEAD STETHOSCOPE

Stethophonendoscope, light, revolving, with rubber membrane and ring in the stethoscope.  
Double ear inserts for listening, with external spring.



| Code      |
|-----------|
| 909071413 |

Spare Parts:

| Code      | Description                                    |
|-----------|--|
| 901069385 | Y-tube for standard stethoscope - color: black |
| 900214141 | Eartips for stethoscope - 6 pcs.               |

# PROFESSIONAL PHONENDOSCOPE

Flat head adult phonendoscope for auscultation. Compact and ergonomic flat head design for perfect handling and complete adherence to the skin. Head made of a special zinc alloy which permits perfect reception and sound conduction; The head dimensions and light weight guarantee maximum maneuverability; Metallic plating obtained by electrolytic processing which prevents the formation of mist on the surface and guarantees a smooth and shiny surface which is pleasing to the touch; Special anti-cold ring that guarantees maximum comfort on the patient's skin.

*The special "two in one" tube contains two separate channels for sound transmission, independently, to the left and right ears, which greatly improves the perceived sound quality. The soft silicone ear-tips ensure the best sound conduction, maximum durability and comfort to the user. The connection between the arch and the ear-tips is designed to avoid accidental detachment between the parts.*



| Code      |
|-----------|
| 925647582 |

Spare Parts:

| Code      | Description                |
|-----------|----------------------------|
| 926983610 | Stethoscope arch           |
| 926983608 | Two-in-one Tube            |
| 926983622 | Head with membrane         |
| 926983596 | Silicone Ear-tips - 1 pair |

## FARMACARE ANTI-DUST MITE LINE PILLOW AND MATTRESS COVERS

Materials used in the manufacturing process:  
Polyester PE 100%, without glues and colorings.

*Intended use: microfibre bed linens for the treatment and prevention of respiratory allergies caused by dust mites.*

Technical characteristics:

- Made of breathable anti dust-mite microfiber proven by laboratory test.
- Light and comfortable
- Sealable via zipper closures
- Easy to wash
- 5 year guarantee for Anti-Dust mite efficiency, provided that cleaning instructions are respected.



| Code      | Description                                      |
|-----------|--|
| 930184472 | Pillow cover - Size 50x80 cms.                   |
| 930184458 | Double bed Mattress cover - Size 200x170x20 cms. |
| 930184433 | Single Mattress cover - Size 200x90x20 cms.      |



## FARMABED WATERPROOF MATTRESS COVER

To protect the mattress in the event of adult or pediatric incontinence. Made of cotton and coated with PVC.  
4 eyelets at the corners.

| Code      | Description         |
|-----------|---------------------|
| 939226419 | size 50 x 70 cms.   |
| 939226433 | size 90 x 140 cms.  |
| 939226421 | size 130 x 140 cms. |



## PURE RUBBER WATERPROOF SHEET WITH EYELETS

*Intended use: For incontinence, allowing patient comfort while protecting the mattress.*

Composition: Latex free rubber - metal eyelets.  
Washable and reusable.

| Code      | Size       |
|-----------|------------|
| 930378688 | cm. 90x60  |
| 930547714 | cm. 90x120 |
| 901794444 | cm. 90x140 |
| 930378738 | cm. 90x200 |





## INCONTINENCE PANT "SUPER"

Super Type  
Triple layer with incontinence pad pocket

*Intended use:*  
*Reusable medical device recommended for adults, male/female, with incontinence (urine, feces and small amounts of wetting). Washable. Used during temporary urinary or fecal incontinence for adults, male and female.*

Composition: 40% Polyester, 30% Polyamide, 30% PVC.  
Available in sizes from 1 to 8.

| Code      | Size |
|-----------|------|
| 909141107 | I    |
| 909141119 | II   |
| 909143719 | III  |
| 909143721 | IV   |

| Code      | Size |
|-----------|------|
| 909195479 | V    |
| 909196572 | VI   |
| 909196584 | VII  |
| 900760909 | VIII |



## INCONTINENCE PANT "STANDARD"

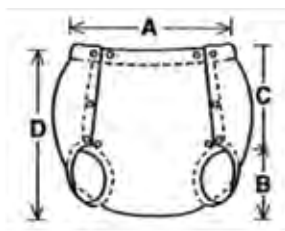
Standard Type  
Waterproof pant with elastic edges  
(85% PVC, 15% POLYAMIDE).

Washable and Reusable  
Opens at the sides and is easy to regulate  
with snaps made of anti-rust steel.  
Available from size 3 to size 7.

*Intended use:*  
*Reusable Medical Device recommended for adults, men or women, with incontinence (urine, feces or minimal wetting).*

| Code      | Size |
|-----------|------|
| 909915466 | III  |
| 909915555 | IV   |

| Code      | Size |
|-----------|------|
| 909915643 | V    |
| 909915732 | VI   |
| 909915821 | VII  |



Note: Indicative size tables to evaluate the pant. The sizes expressed are intended as indicative according to the absorbent pad used in relation to volume.

| Ref. code<br>Mod. SUPER | Ref. code<br>Mod. STANDARD | Size | A<br>Waist circ. lying<br>down and in elastic<br>extension cms. | B<br>Leg circ. lying down<br>and in elastic<br>extension cms. | C<br>Hip height<br>cms. | D<br>Height from<br>waist to crotch<br>cms. |
|-------------------------|----------------------------|------|---|---|-------------------------|---|
| 909141107               |                            | 1°   | 52 - 80   | 28 - 46   | 20                      | 37  |
| 909141119               |                            | 2°   | 58 - 86   | 30 - 48   | 21                      | 38  |
| 909143719               | 909915466                  | 3°   | 62 - 90   | 32 - 50   | 22                      | 40  |
| 909143721               | 909915555                  | 4°   | 66 - 94   | 34 - 52   | 24                      | 41  |
| 909195479               | 909915643                  | 5°   | 70 - 96   | 37 - 54   | 26                      | 43  |
| 909196572               | 909915732                  | 6°   | 76 - 100  | 38 - 56   | 28                      | 45  |
| 909196584               | 909915821                  | 7°   | 82 - 110  | 40 - 60   | 29                      | 46  |
| 900760909               |                            | 8°   | 88 - 116  | 44 - 64   | 30                      | 49  |

## SYNTHETIC ANTI-DECUBITUS FLEECE

*Indicated for the aged patient with reduced mobility, patients with a handicap and all those who spend lengthy periods in bed or sitting.*

### Characteristics:

Offers a soft support thanks to its 100% polyester fiber, 2 cms. height, that permits the passage of air between the skin and the pressure surface, thus favoring evaporation of perspiration. Prevents the formation of decubitus bed sores, and is a valid assistant in the cure of bed sores that already exist. Unique among products available on the market, it has a particularly soft base which supplies a necessary support without causing the surfaces where it is used to become too rigid (bed or wheelchair).

Washable and reusable

Composition: 100% Polyester. Latex free.



| Code      | Size        |
|-----------|-------------|
| 909068518 | 50x70 cms.  |
| 909068520 | 100x70 cms. |

## ANTI-DECUBITUS ELBOW/HEEL PROTECTOR MADE OF SILICONE COATED HOLLOW FIBER

### Characteristics:

Specifically studied both in form and materials employed, these devices are particularly soft thanks to special insulation made of silicone coated hollow fibre (100% polyester). Latex free.

The quantity of hollow fiber employed guarantees a good distribution of pressure points and notable comfort.

Washable and reusable.

Outer casing in pure sanforized cotton (100% cotton).

### Intended use:

*Prevention of bed sores on elbows or heels.*

ELBOW - 1pc.



HEEL - 1pc.



| Code      | Description                                     |
|-----------|---|
| 906468956 | ELBOW Width: 35 cms. – Depth: 24 cms.           |
| 906468982 | HEEL Width: 15cms. Depth: 20cms. Height: 16cms. |

## ELBOW/HEEL PROTECTORS

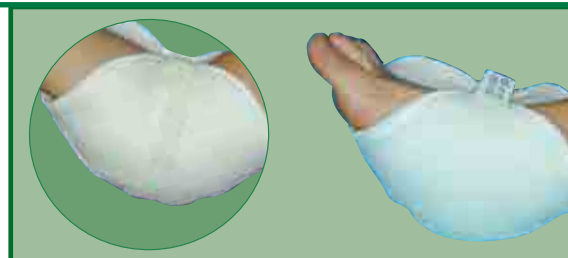
Polyester – 2 pcs.

### Intended use:

*Prevention of decubitus bed sores on the elbows and heels for patients on long term care that are at risk. Includes supplemental disk to increase efficiency. Adjustable hook and loop fastener closure. Non-sterile. Washable and reusable.*

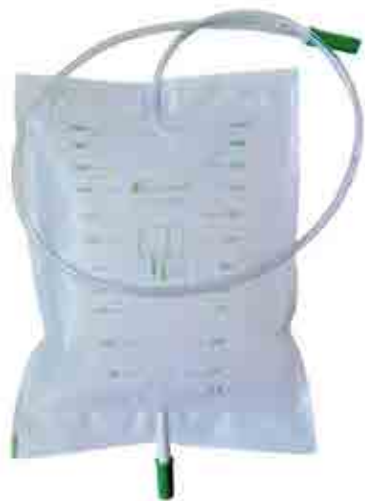
### Composition:

90% Polyester, 10% nylon. Latex free.



| Code      |
|-----------|
| 909068405 |

## BEDSIDE URINE BAG WITH DRAIN



Made of medical PVC.  
High level of quality for reliability and safety, these urine collection bags are used and appreciated all over Europe.

2000ml capacity  
Tube length: 90 and 130 cms.  
Ø of internal tube: 6,1 mms.  
Ø of external tube: 8,8 mms.

*Characteristics and intended use:*  
*Urine bag for use exclusively to collect and dispose of urine from bed ridden patients. Disposable device, not intended to measure or for laboratory tests. The volume indications are approximate. Made of PVC containing phthalates and latex free. Non-sterile. The articles supplied with a discharge drain include an anti-reflux valve and push-pull type discharge valve.*

| Code      | Tube length | Pckg.   |
|-----------|-------------|---------|
| 931466205 | 130 cms.    | 30 pcs. |
| 931575450 | 90 cms.     | 30 pcs. |

| Code      | Tube length | Pckg.   |
|-----------|-------------|---------|
| 974844805 | 130 cms.    | 10 pcs. |
| 974844793 | 90 cms.     | 10 pcs. |



## EXTERNAL MALE CATHETER FARMACONDOM

When prescribed by the Doctor, the FARMACONDOM External Male Catheter can be used by some patients with urinary incontinence problems. To correctly perform its function, it must be connected to a urine collection bag.

Composition: Made of pure latex rubber, with connection tube. Does not contain phthalates.  
Disposable.

Warning: latex can cause allergic reactions.

Packaging: Box of 30 packages; each package contains one external catheter and one double adhesive tape.

*Non-sterile package*



| Code      | Size      |
|-----------|-----------|
| 900652658 | Ø 25 mms. |
| 900652660 | Ø 30 mms. |
| 900652672 | Ø 35 mms. |



## CUSHION WITH HOLE AND COVERING



The upper part is cut into with special channels to allow a gradual ventilation. Particularly indicated for the treatment of prostate, anal and genital operations.

Composition: foam polyurethane

Covering: 100% cotton jersey

"Class of fire resistance: 1.IM"

### Code

904948496



## RUBBER RING CUSHION - LATEX FREE

For use exclusively when prescribed by a doctor for: Hemorrhoidectomy, when confined to bed for lengthy periods, for use on the toilet.

Composition: Rubber, Steel.

### Code

### Description

901794370 Ø 40 cms. external

901794382 Ø 43 cms. external

972389276 Ø 45 cms. external



### Code

937414706

### PUMP FOR RING CUSHION Latex free



## RING CUSHION - with and without cover



*Indicated for post-operative recovery.*

The upper part has special cut channels to allow a gradual ventilation.

Composition: Polyurethane foam, washable with water and mild soap.

Covering: 100% cotton jersey; with drawstring; washable with water and mild soap.

Dimensions: height 10 cms.

Ø internal 15 cms. Ø external 42 cms.

"Class of fire resistance: 1.IM"

### Code

### Description

904948484 with cover

909302503 without cover





## CAST SAVER

To protect the cast while showering.  
Package containing 6 pieces.

| Code      | Description                 |
|-----------|-----------------------------|
| 909916621 | for arm/foot - 28 x 60 cms. |
| 909916809 | to knee-high - 45 x 80 cms. |
| 909916987 | for legs - 45 x 115 cms.    |



## UNIVERSAL TOILET SEAT EXTENTION Made of Soft Plastic

Soft, comfortable and strong, solid module, easily and completely washable. Special composition of material which warms upon contact. Adaptable to all standard toilets. Particularly indicated for seniors and persons with disabilities.



Maximum weight 185 kgs.  
Height: 11 cms.  
Width: - external diameter 37 cms.  
- internal diameter 21 cms.  
Length: - external diameter 40 cms.  
- internal diameter 27 cms.

| Code      |
|-----------|
| 909844514 |



## TOILET SEAT EXTENTION WITH ARM RESTS Rigid Model

Designed for persons who have difficulty to sit down or get up from the toilet, this extension is attached to the toilet by a front anchor: a lengthwise adjustable plastic screw-on attachment. Fast and easy to attach, it adapts to the majority of toilets. The seat of the extension device has both anterior and posterior openings to permit better accessibility for personal hygiene. Slightly negatively inclined, it helps for correct posture positioning and reduces the hip and knee flexing required. The arm rests guarantee better holding capability and stability for the user.

Technical characteristics:

Washable

100% high density low toxicity polyethylene  
with antibacterial properties.

Maximum weight 130 Kgs.

Dimensions:

46 (50 with arm rest) x 41 cms.

Opening 25,5x17 cms.

Height 10 cms.

Weight 2 Kgs.



| Code      |
|-----------|
| 902725910 |

## TOILET SEAT EXTENTION WITH BIDET - Rigid Model

Designed for those with difficulties to sit down and get up from the toilet, the Extension Seat is fixed onto the toilet by a lateral anchoring mechanism with two lateral plastic width-adjustable supports. Fast and easy to attach.

It is adaptable to the majority of toilet seats.

The extension seat has side and rear openings which allow better access for personal hygiene.

The seat is slightly negatively inclined to favour correct posture and to reduce hip and knee flexing.

### Complete with bidet

Technical characteristics:

- Washable in water with neutral soap
- 100% low toxicity polypropylene with antibacterial properties
- Maximum weight allowed 225 kgs.
- Available with or without cover and in two heights 10 and 14 cms.
- Dimensions: 40,5 x 36,5 cms.
- Opening: 26 x 20 cms.



| Code      | Description                          |
|-----------|--------------------------------------|
| 902666864 | with bidet, with cover h. 10 cms.    |
| 902666977 | with bidet, without cover h. 10 cms. |
| 930547676 | with bidet, with cover h. 14 cms.    |
| 930549199 | with bidet, without cover h. 14 cms. |

## DISPOSABLE BRIEF

Convenient for use in many situations: during the menstrual cycle, in the hospital after giving birth, for gynecological appointments, while travelling, camping, etc.

Made of particularly resistant non-woven textile.

| Code      | Description                       |
|-----------|-----------------------------------|
| 906480037 | Medium size (package of 6 pieces) |
| 906480052 | Large size (package of 6 pieces)  |



## VISITOR'S GOWN

Colour light green

Complete with elastic cuffs

One size fits all

Weight 27 gr./mq.

| Code      |
|-----------|
| 903012324 |



## SHOE COVERS

**SHOE COVERS POLYETHYLENE** – Pckg. 100 pcs.  
Thickness of polyethylene: 30 u 15 x 36 cms.  
Colour: Blue

**Code**

903012235

**NON-WOVEN SHOE COVERS** – Pckg. 100 pcs.  
Colour: Dark green  
Weight: 27 gr/mq - Size: 38 x 20 cms.

**Code**

903012250

## BIB IN COATED FABRIC WITH POCKET

Intended use: protect the user from liquids and solids. Latex free.  
Instructions for use: separate the two straps along the pre-cut line.  
Use the strap to tie the bib around the neck.  
Composition: paper and polyethylene.  
Colour: Blue - Pckg. 100 pcs.

**Code**

904318728

## SINGLE USE GREEN FACE MASK

Single use 3 layer Disposable Face Mask made of non-woven textile, with 4 laces and moldable nose bridge. Latex free. Resistant to fluids. 100% free from fiber glass fibers. Single use disposable.  
Colour: Green. Pckg. 50 pcs.

**Code**

909141018

## 2 LAYER RICE PAPER FACE MASK

With elastic bands. Latex free. Colour: White.  
Single use disposable. Pckg. 100 pcs.

**Code**

909141095

## DISPOSABLE HYGIENIC MASK

*Intended use: the device is intended to reduce the risk that the user contaminates the outer environment.*

Materials: Polypropylene (weight 180 gr/sq mts.) Latex free.

Characteristics of the device: white shell Hygienic Mask with back of the head elastic band to anchor the mask over the face and malleable metal nose bridge to ensure better adherence of the mask over the face.

The material porosity does not impede normal respiration. Non sterile. Pckg. 50 pcs.

**Code**

901101547



## NON-WOVEN CAP

Colour: Green.  
Weight: 16 gr/mq - Diameter: 52 cms  
Pckg 100 pcs.

| Code      |
|-----------|
| 903012274 |



## ORAL CLEANING STICKS

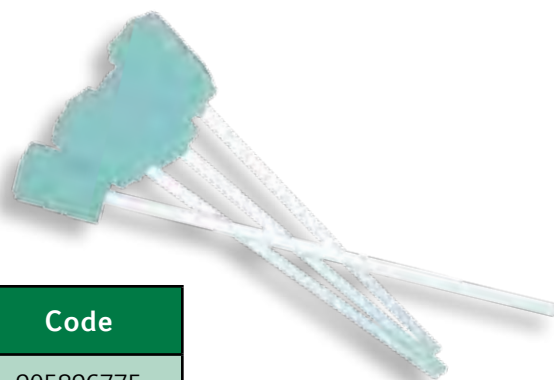


Can be used for various cleaning procedures.  
Mainly indicated for oral cavity cleaning.



| Code      |
|-----------|
| 978981963 |

Composition: Handle made of polystyrene and foam sponge (polypropylene foam).  
Non sterile. Disposable.  
Package of 20 pcs. (single-packed)



| Code      |
|-----------|
| 905896775 |

Composition: Handle made of polystyrene and foam sponge (polyurethane foam).  
Non sterile. Disposable.  
Package of 5 pcs.

## PATIENT PAJAMAS UNISEX



Especially indicated for long term bedridden and non self-sufficient patients who often are uncomfortable with garments and/or absorbent pad devices. Elastic waist band helps maintain the pajamas in the right position so that they don't roll up.

This is very important for patients in bed or sitting in a wheelchair. The rear zipper has a triple cursor, it can be opened in both directions. This characteristic permits a caregiver to perform hygiene on the patient without having to expose the entire back, and in particular, offers a versatile design which is adapt to the majority of patient needs.

Composition: 95% Cotton - 5% Elastan



| Code      | Description    |
|-----------|----------------|
| 927147862 | Size XS Unisex |
| 927147874 | Size S Unisex  |
| 927147886 | Size M Unisex  |
| 927147898 | Size L Unisex  |
| 927147900 | Size XL Unisex |

| Weight | Height |            |            |            |            |
|--------|--------|------------|------------|------------|------------|
|        | KG.    | cm.145/155 | cm.150/160 | cm.150/160 | cm.150/160 |
| 40/50  | XS     | XS         | S          | S          | M          |
| 50/60  | XS     | S          | S          | M          | M          |
| 60/70  | S      | S          | M          | M          | L          |
| 70/80  | M      | M          | M          | L          | XL         |
| 80     | M      | L          | L          | L          | XL         |



## DISPOSABLE SOAPY MITT PLUS – to cleanse the body

Innovative soapy mitt which is pre-soaped on both sides.  
Ideal for total body hygiene, to cleanse large surface areas.

Technical Characteristics:

- Rectangular, two sided Mitt made of 100% polyester fibre.
- Heat sealed with polyester thread.
- Both sides are pre-soaped with PH neutral 5.5 dermatological soap.
  - Single use
  - Latex free.

Dimensions: 15.5 x 20 cms.  
Weight: 60 grs.

Packaging: Bag of 20 pcs. – Box of 45 bags.

Cosmetic product conforming to European Regulation 1223/2009

Code

930547524



## DISPOSABLE SOAPY MITT – to cleanse the body

Technical Characteristics:

Mitt made of non-woven textile on one side, and polyester heat sealed fiber with polyester thread on the other side.  
One side is pre-soaped with PH neutral 5.5 dermatological soap.  
Latex free.

Dimensions: 21 x 12 cms.  
Weight: 60 gr/m2

Packaging: Bag of 20 pcs. – Box of 50 bags.

Code

902091368



## DISPOSABLE PRE-SOAPED SPONGE – to cleanse the body

Technical Characteristics:

Pre-soaped sponge made of polyurethane foam coated with PH neutral 5.5 dermatological soap. Single use – Latex free.

Dimensions: 12 x 20 x 1 cms.

Packaging: Bag of 20 pcs – Box of 45 bags.

Code

939338695





## NATURAL SEA SPONGE



Extreme softness, elasticity and strength are characteristics that are typical of Mediterranean sea sponges. They are prepared and treated with special processes that make them particularly adapt for sensitive or irritated skin. Long lasting. Large absorbance capacity.

Available in two types: with large holes or smaller more minute holes. The latter is more compact, soft and velvety, and due to its characteristics, is used mainly for cosmetic applications. It is also used frequently where particular delicate treatment is required.



| Code      | Description                         |
|-----------|-------------------------------------|
| 900589490 | (large holes) ø 8/9 cms. (N. 5)     |
| 900589514 | (large holes) ø 10/11 cms. (N. 7)   |
| 900589526 | (large holes) ø 11/12 cms. (N. 8)   |
| 900589538 | (large holes) ø 12/13 cms. (N. 9)   |
| 900589540 | (small holes) ø 5/6 cms. (N. 7/V)   |
| 900589565 | (small holes) ø 9/10 cms. (N. 11/V) |



## NON-SOAPED WATERPROOF WASH MITT



| Code      |
|-----------|
| 926252139 |

Type: disposable, Latex free  
Characteristics: external side is very absorbent, internal side is totally waterproof. Optimum resistance to traction both longitudinally and transversally. Allows the user to select the specific soap required according to individual needs.  
Color: blue Intended use: ideal to wash sensitive skin (children, seniors, and disabled persons).

Materials: External side made of Airlaid paper;  
Internal side made of blue PE. Adhesive: water based.

Dimensions: 16 x 24 cms. (+/- 3%).

Primary packaging: Packaged in polyethylene bags 100pcs./bag  
Carton: 1000 pcs.



## STRETCHABLE NON-SOAPED WASH MITT



| Code      |
|-----------|
| 927264061 |

Composition: TNT non-woven Spunlace (80% polyester and 20% Viscose). Grams 50 gr/mq. Latex free

*Intended use: extremely soft mitt made of Non-Woven Spunlace. Ideal for washing sensitive skin (children, seniors and disabled persons).*

Characteristics of the device: does not contain soap, thus permitting use of specifically chosen soaps, according to individual necessities.  
Single use product and single user. One size (16 x 23 cms.). White color.  
Absorbent capacity: 800% (8 times the weight of the product).

Contains no toxic chemical substances.

Primary packaging: packaged in bags containing 50 pcs.

## ARM SLING ADULT & PEDIATRIC MODELS

Allows immobilisation of the arm in the correct position for cases of dislocations, trauma and casts. With support lining for the hand (only reinforced models). Medical Device, non-sterile.  
Composition: 100% cotton textile, reinforcement and shoulder pad made of polyurethane foam, strap 100% polyester. Machine washable at 30°C with neutral soap. Do not wring. Dry away from heat sources.

| Code      | Description                   |
|-----------|-------------------------------|
| 909810412 | Simple type - size Medium     |
| 909810501 | Simple type - size Large      |
| 978833717 | Simple type - Pediatric       |
| 909819132 | Reinforced type - size Medium |
| 909819221 | Reinforced type - size Large  |



## FARMASPLINT FOLD-OVER FINGER SPLINT FOR FRACTURES

Preformed, bendable aluminium single use device with hypo-allergenic polyurethane foam lining - Radiopaque.

*Intended use:*

*To immobilise and protect the finger joints in case of fracture of the first and/or second phalanges, and maintain in a neutral position, while protecting the finger nail from external trauma.*

*Available in 1pc. packaging:*

| Code      | Description      |
|-----------|------------------|
| 904305226 | Small - 7 cms.   |
| 904305277 | Medium - 12 cms. |
| 904305289 | Large - 15 cms.  |

*Hospital packaging 12 pcs.:*

| Code      | Description      |
|-----------|------------------|
| 904305291 | Small - 7 cms.   |
| 904305315 | Medium - 12 cms. |
| 904305327 | Large - 15 cms.  |



## FARMASPLINT TOAD FINGER SPLINT FOR FRACTURES

Preformed, single use device made of pliable aluminium Lined with anti-allergic polyurethane foam - Radiopaque

*Intended use:*

*To immobilise and protect the finger joints and maintain them in a semi-flexed position in the event of a fracture.*

*Available in 1pc. packaging:*

| Code      | Description       |
|-----------|-------------------|
| 904305339 | Small - 8 cms.    |
| 904305354 | Medium - 8.5 cms. |
| 904305378 | Large - 10 cms.   |

*Hospital packaging 12 pcs.:*

| Code      | Description       |
|-----------|-------------------|
| 904305341 | Small - 8 cms.    |
| 904305366 | Medium - 8.5 cms. |
| 904305380 | Large - 10 cms.   |



## INSTANT ICE WITH UREA

Intended use: indispensable for any first aid situation and for all cases where the use of cold treatment is required: during sports, free time, at work, to combat neuralgia (e.g., toothache), pulled muscles, sprains, bruises, heat stroke, insect bites, contact with irritating substances, following simple surgical procedures (tooth extraction, aesthetic treatments, etc.)

Available in single packaging or in packages of 2 pcs. (the package of 2 pcs. also includes a non-woven textile pouch for use on the face and/or particularly sensitive or delicate areas).

Composition: UREA and clean water. Latex free. Does not contain ammonium nitrate, so there are no legal limits regarding the storage of quantities.

| Code      | Description |
|-----------|-------------|
| 974104248 | single pack |
| 974104251 | double pack |



## ICE SPRAY

Indicated for all cases of trauma for pain relief and to prevent the formation of bruises, swelling, etc. Particularly indicated for sports activities. Contents of can: 400 ml.

| Code      |
|-----------|
| 900649118 |



## ICE BAG

For pain relief in cases of trauma and to prevent the formation of bruises, swelling, etc. When prescribed by the doctor it can be used to treat high fever. Made of textured rubber textile, 100% cotton. Screw on cap with rubber gasket. Plastic border around the top (to avoid formation of rust). Available in three different sizes.

| Code      | Description |
|-----------|-------------|
| 900647140 | Ø 25 cms.   |
| 900647165 | Ø 28 cms.   |
| 900647177 | Ø 31 cms.   |





## FINGER PROTECTOR CURVED OR STRAIGHT

Finger Protector - Curved (for thumb) or Straight  
To hygienically protect medicated finger wounds.



| Code      | Description     |
|-----------|-----------------|
| 923208781 | Straight Size 1 |
| 923208793 | Straight Size 2 |
| 923208805 | Straight Size 3 |
| 923208817 | Straight Size 4 |
| 923208829 | Straight Size 5 |
| 923208831 | Straight Size 6 |

| Code      | Description   |
|-----------|---------------|
| 923208843 | Curved Size 1 |
| 923208856 | Curved Size 2 |
| 923208868 | Curved Size 3 |
| 923208870 | Curved Size 4 |
| 923208882 | Curved Size 5 |
| 923208894 | Curved Size 6 |

The elasticity of the latex safeguards and holds the medication in place, permitting movement.

Material: Natural latex.



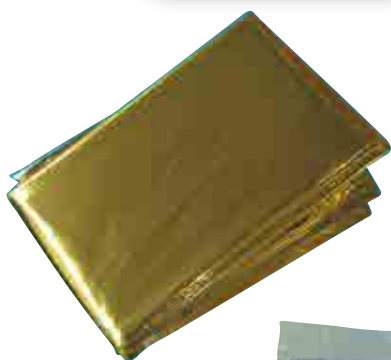
## ISOTHERMIC BLANKET GOLD/SILVER

First-aid for burn victims, trauma, etc. It has a double function:  
protection from cold or heat.

If positioned with the Silver side in contact with the body,  
about 80% of body heat is conserved (protection from the cold).

If positioned with the gold side in contact with the body,  
it reflects the sun's rays and allows the body to remain  
cool (protection from heat).

160 x 210 cms.



Code

909411581



## FANNY PACK FOR CAMPERS/TREKKERS

Empty fanny pack:



Code

972782460

## FARMAELASTIC KNEE SOCK

Elastic Knee sock with graded compression, open toe - **2 pcs.**

With silk textile slide assist.

Pressure Class 1 (20-30 mm Hg) - Latex free.

*Intended use:*

*Post-phlebitis syndrome.*

*Minor venous insufficiency.*

*Minor swelling of the lower limbs from various causes (bruises, trauma, sprains).*

*Pre and post operative preparation of patients with risk of minor phlebitis.*

*Inflammation associated with varicose veins.*

*Compliment to sclerosing therapy.*

*Other pathologies as indicated by doctors.*

| Code      | Description  |
|-----------|--|
| 902176458 | S - circumference ankle 19-22 cms.- circ. calf 28-34 cms.  |
| 902176763 | M - circumference ankle 22-25 cms.- circ. calf 34-40 cms.  |
| 902176787 | L - circumference ankle 25-28 cms.- circ. calf 40-46 cms.  |
| 902176799 | XL - circumference ankle 28-32 cms.- circ. calf 46-53 cms. |



## FARMAELASTIC KNEE SUPPORT

Single packaged.

Beige colour.

Polyamide, Elastam, Cotton.

Latex free.

*Intended use:*

*Minor sprains or strains, post-traumatic effects or for sports activities.*

To select size, measure the circumference under the knee.

| Code      | Description    |
|-----------|----------------|
| 902176256 | S - 30-37 cms. |
| 902176270 | M - 38-47 cms. |
| 902176282 | L - 48-60 cms. |



## FARMAELASTIC ANKLE SUPPORT

Single packaged.

Beige colour.

Polyamide, Elastam, Cotton.

Latex free.

*Intended use:*

*Minor sprains or strains, post-traumatic effects or for sports activities.*

| Code      | Description    |
|-----------|----------------|
| 902176371 | S - 19-22 cms. |
| 902176395 | M - 23-26 cms. |

| Code      | Description     |
|-----------|-----------------|
| 902176407 | L - 27-30 cms.  |
| 902176419 | XL - 31-35 cms. |





# ANTITHROMBOSIS STOCKING

## THIGH MODEL



Characteristics:

*Polyextensive knit insert:* avoids the tourniquet effect. Better fit and comfort.

*Modelled heel:* helps to avoid slipping up or down and increases patient comfort.

*Inspection hole:* all models have an inspection hole for quick checking of the foot.

*Silicone support band:* keeps stocking from moving and guarantees good compression without the risk of allergic reactions.

*Stocking size visible on foot:* permits easy identification of the size. Does not fade or wear out.

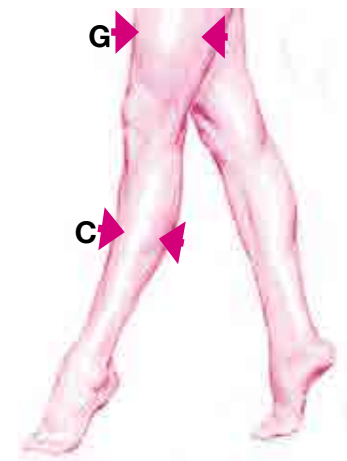
*Wide range of sizes:* adapt for 90% of patients. Guarantees correspondence to Siegel Profile values.

*Follows the Siegel clinical profile parameters closely:* blood velocity increases 138,4%.

Package contains: 1 pair.

Size identification table:

- 1) Measure the circumference of the thigh at point G, if measurement is less than 63 cms. Choose from sizes S-M-L, if measurement is between 63 cms. and 81 cms. It is recommended to choose size XL of the thigh model.
- 2) Measure the circumference of the calf at point C to determine the final size.
- 3) Measure the distance from the heel to the crotch, to determine the length.



| Thigh circumference "G" | Calf circumference "C" | Leg Length          | Size   | Code      |
|-------------------------|------------------------|---------------------|--------|-----------|
| Less than 63 cms.       | Up to 31 cms.          | Up to 74cms.        | S-SHT  | 900478064 |
|                         |                        | From 74 to 80cms.   | S-REG  | 900478328 |
|                         |                        | Greater than 80cms. | S-LNG  | 900478367 |
|                         | From 31 to 36 cms.     | Up to 74cms.        | M-SHT  | 900478405 |
|                         |                        | From 74 to 80cms.   | M-REG  | 900478431 |
|                         |                        | Greater than 80cms. | M-LNG  | 900478456 |
|                         | From 36 to 42 cms.     | Up to 74cms.        | L-SHT  | 900478494 |
|                         |                        | From 74 to 80cms.   | L-REG  | 900478619 |
|                         |                        | Greater than 80cms. | L-LNG  | 900478672 |
| From 63 cms. to 81 cms. | Greater than 38 cms.   | From 74 to 80cms.   | XL-REG | 900478773 |
|                         |                        | Greater than 80cms. | XL-LNG | 900478936 |

## ELECTRO-CONDUCTIVE GEL

*Intended use: recommended for all medical diagnostic applications when it is necessary to reduce the contact resistances between signal receiving electrodes and the patient's skin during recording of bio-electric signals (ECG, EEG, EMG, PE) or for therapeutic treatments to optimize the coupling between electrodes and the skin during electrical therapies administration (defibrillation, cardioversion, electro-physiotherapy) to avoid the risk of burns. Without color or odor. For external use. Non-sterile. Disposable.*

250 ml.

1000 ml.

Code

935610600

Code

926830668



## ULTRASOUND GEL

Conductive gel for ultrasound devices. Water soluble. Hypoallergenic. Transparent and free of dyes. The Ultrasound Gel is water soluble, is not greasy, does not irritate the skin, does not contain corrosive substances nor salts and does not damage ultrasound device transducers. Contains: Water, propylene glycol, sodium carbomer, disodium edta, methylparaben.

250 ml.

1000 ml.

Code

930244847

Code

926830643



## SINGLE SOLUTION WITH HYALURONIC ACID WITH LENS CASE - 360 ml.

Properties: Single solution with hyaluronic acid offers a highly disinfecting action, preservative, lubricant and detergent. With sodium hyaluronate: this polymer with high visco-elastic properties improves lubrication and tollerability of lenses, thanks to its capacity to withhold water. Protects the cornea from irritation, improves stability of the tear film, indicated for sensitive eyes.

*Intended use: Polyvalent solution for disinfection, preservation, cleaning, moisturization, lubrication, rinse and removal of protein deposits from all types of contact lenses.*

Composition: Buffered isotonic solution with pH 7,2 containing: Polyesamethylenbiguanide 0,0001%, Mirapol A15, sodium edetate, Methyloxirane polymer and sodium hyaluronate 0,025%.

Primary packaging: 1 bottle, 360 ml. and lens case.

Code

970487777





## SILICONE NEONATAL RECTAL CANNULA

To facilitate the evacuation of air and feces exclusively for neonates.  
 Biocompatible, water repellent and easy to wash.  
 Non-sterile.  
 Available in various diameters.  
 10 cm. length.  
 Materials: 100% platinum cured medical grade biocompatible silicone.  
 Does not contain latex. Does not contain phthalates.



| Code      | Description |
|-----------|-------------|
| 930196934 | 4 x 10 mms. |
| 930378740 | 5 x 10 mms. |
| 930378753 | 6 x 10 mms. |
| 930378765 | 7 x 10 mms. |
| 930378777 | 8 x 10 mms. |



## SIMPLEX ENEMA



Set complete for travelling (cannula included).  
 Ideal for feminine personal hygiene. For vaginal  
 and/or anal douche 2lt. bag - PVC tube.  
 Anal/vaginal cannula - HDPE connectors.

| Code      |
|-----------|
| 908997758 |



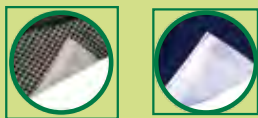
## FARMANIPPLE SILICONE NIPPLE GUARDS



Pure silicone nipple protectors 2 pcs.  
 Necessary for breast feeding in the presence of flat or  
 inward turned nipples. Useful also for sensitive nipples or  
 when inflammation and/or tears occur. The use of nipple  
 protectors permits prolonged breast feeding which is  
 advantageous to the baby. If applied during sports, they  
 avoid nipples rubbing on clothes which causes irritations.  
 Store and or transport the product dry and in the plastic  
 carrying case supplied. Latex free.

| Code      |
|-----------|
| 903645947 |

## STOMA COVER LINE - Bibs - Collars - Scarves



## STOMA COVER BIBS

*Intended use:* For patients that have undergone tracheostomy, to protect the stoma from the external environment. The model with protection has a layer of polyester which withholds any expectorate residues and facilitates removal.

Washable and reusable. Components: 100% mercerized cotton, 100% polyamide hook and loop fastener piece supplied, 100% polyester protection. Latex free.

| Code      | Color |
|-----------|-------|
| 909199426 | BLUE  |
| 926621463 | BEIGE |
| 909199414 | WHITE |

| Code      | Description                    |
|-----------|--------------------------------|
| 926621347 | WHITE with internal protection |
| 926621350 | BLUE with internal protection  |



## STOMA COLLAR

100% polyester – 6 layers

*Intended use:* For patients that have undergone tracheostomy, to protect the stoma from the external environment. The 6 layers of polyester withhold expectorate residues and facilitate removal, with easy dispersion of any remaining humidity.

Washable and reusable.

Components: 100% polyester – comes with automatic metal buttons. Latex free

| Code      | Color |
|-----------|-------|
| 926621374 | WHITE |
| 926621424 | BEIGE |



## SCARF WITH PROTECTION

*Intended use:* for patients that have undergone tracheostomy to protect the stoma from the external environment. The polyester layer withholds any expectorate residues and facilitates removal. Particularly indicated to mask the stoma area.

Washable and reusable.

Components: 100% viscose – 100% polyester (protection). Latex free - ALSO WITH INTERNAL PROTECTION

| Code      | Color       |
|-----------|-------------|
| 926621451 | BLUE        |
| 926621448 | BLACK/BEIGE |
| 926621436 | BLACK/WHITE |

## CANNULA SUPPORT COLLAR FOR TRACHEOSTOMY

*To sustain and maintain the tracheostomy cannula in the correct position.*

Adjustable on both sides with its closure device.

Made of 80% Polyamide – 20% Polyurethane.

One size fits all. Latex free. White color.

Non Sterile – Non Sterilizable (Does not come with the tracheal cannula)

| Code | 901012029 |
|------|-----------|
|------|-----------|

## Pillows

## FARMADREAM

## CERVISAN 4 POSITION PILLOW



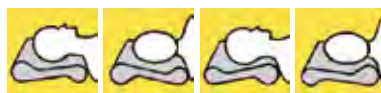
*Intended use: Particularly indicated for those affected by arthritis and headaches. Cervisan prevents neck disorders caused by the lack of support of the cervical vertebrae during sleep (stiff neck, headache, stiffening of muscles at the back of the neck and shoulders).*

Dimensions: 60 x 36 cms. – cylinder diameters 9/11 cms.  
Materials: Polyurethane foam (pillow)  
100% cotton (external casing) Latex Free.



Code

909811224



## CERVISAN ANTI-ALLERGY PILLOW

*Intended use: The anatomical form of this pillow makes it particularly indicated for those cases where support and traction to the cervical vertebrae are required, to guarantee healthy and comfortable sleep.*

Dimensions: 70 x 38 cms. – height: 9 and 11 cms.

Materials: Pillow with two rolls of polyurethane foam (pillow) embedded in a silicone fiber external covering to guarantee a soft and comfortable support. Non removable external casing made of polyester treated with anti-bacterial and anti-fungal components. Latex free.



Code

909916544



## ANATOMICAL PILLOW FOR CERVICAL ARTHRITIS

*Intended use: Particularly indicated for those affected by arthritis and headaches. Cervisan prevents neck disorders caused by the lack of support of the cervical vertebrae during sleep (stiff neck, headache, stiffening of muscles at the back of the neck and shoulders).*

Dimensions: 63 x 36 cms. – Maximum height: 10 cms.

Materials: polyurethane foam (pillow)  
100% cotton (external casing with zipper) Latex free.



Code

909302491



## REFRIGERATOR BAG FOR DIABETIC KIT

CONTAINS REFRIGERATION GEL

For containing and transporting products requiring low temperature conservation, including those necessary to diabetic patients. The refrigeration gel packet should be placed in its compartment in the bag, to avoid direct contact with other objects contained therein. It is recommended to keep the gel pack in the freezer for use when it is frozen solid. Practical, lightweight and strong; can be used as a bag or handbag thanks to its convenient included wrist strap. Internally and externally washable using a soft damp cloth.

Dimensions: 19x11x5 cms.

Total weight: (bag + gel pack) 196 gr.

Polyester bag – water and glycerol based gel pack. Material: Polyester

Code

931772875

## HOT WATER BOTTLE PLUS - BS STANDARD



High quality and extra wall thickness of the rubber assure maximum strength and safety of use. Made of pure rubber.

Does not yellow or crack.

Red color - 2 lt. capacity.



Code

938982257

## HEATING PADS

For neck and cervical vertebrae, arm, shoulder, back, abdomen, lumbar region. Automatically adapts the chosen temperature to the various methods of use to always maintain the desired comfort. NEW TECHNOLOGY: Different from the technology used in traditional heating pads, the Farmacare® heating pad innovatively employs the functions of a micro-processor to obtain unique results. It guarantees optimal heating effects and in complete safety, both when placed on the abdomen or on the back. There are 5 temperature settings to choose from. Digital command with 5 temperature settings with ultra-rapid heating. Soft washable microfibre fabric, hypo-allergenic and breathable. Low energy consumption, only 15 W. Automatic turn off 3 hours. Electrobloc® safety system



Code

923876736

Description

Heating Pad for  
cervical vertebrae  
42 x 38 cms.



Code

923876748

Description

Heating Pad  
40 x 35 cms.



## TICK REMOVER WITH LENS

The probability of transmission of pathogenic agents by tick bites depends closely on the length of time that the tick remains on its host and in general the risk is low if the tick has been attached for less than 24-48 hours. That is why it is important to remove the tick as fast as possible.

For perfect care of the skin and for an easy and sure removal of ticks.

Designed to remove ticks of different dimensions. Easy and practical to use, it has two cut extremities and a third in which a magnifying lens is inserted to permit fast removal of the tick and in total safety.

**Code**

930251828

Single blister package.

## TICK REMOVAL TWEEZERS

For perfect care of the skin and for an easy and sure removal of ticks.

Pckg. 1 pc.



**Code**

937414656

## STEEL TICK REMOVER TWEEZERS

To remove ticks easily.

Designed to remove smaller size ticks.

Single blister package.



**Code**

930196629



## ERGONOMIC CUTLERY FOR THE DISABLED

Ergonomic design that facilitates autonomous eating for those persons who have difficulty to use standard tableware. The curved, soft handle grips facilitate easy picking up and stable holding of the tableware without needing to bend one's arm excessively. Ideal for persons with limited mobility of the upper limbs or with temporary or permanent handicaps, autism, dementia, Alzheimer's, etc.

Spoon and fork are available with left or right hand grips. The knife hand grip is ambidextrous.

Dishwasher safe. Materials: PP – TPE.



| Code      | Color                                |
|-----------|--------------------------------------|
| 973151069 | Ergonomic FORK for disabled hand RH  |
| 973151071 | Ergonomic FORK for disabled hand LH  |
| 973151044 | Ergonomic SPOON for disabled hand RH |
| 973151057 | Ergonomic SPOON for disabled hand LH |
| 973151083 | Ergonomic KNIFE for disabled hand    |

## REMOVER SPRAY

Permits easy, quick and painless removal of medical adhesives. Particularly indicated to remove: ileostomy bags, colostomy bags, urostomy bags, medicated and medication plasters, tape bandages, etc.

Contents: No alcohol, does not burn. No oils, does not leave any oily residues, which allows easy application of new adhesive. Propellant is isolated from the active ingredient. No temperature shock when sprayed on the skin. Delicate on the skin.

The innovative internal valve BOV (BAG ON VALVE) on the canister guarantees:

- Optimum distribution of the spray.
- Product can be sprayed from any angle (360° of action) which allows the user to reach any area of the body.
- The entire contents of the canister (50 ml) will be used without any residues or waste.
- After use, it is not necessary to wash the skin area to remove the product.
- The product dries quickly, allowing immediate application of a new medical adhesive (found on ileostomy, colostomy and urostomy bags).

Composition: Mix of Siloxanes. Non toxic and non cytotoxic. 50 ml.



Code

923555116

# Export Catalogue



Via Antonio Gramsci, 8/10/12/14  
40018 San Pietro in Casale (Bologna) Italy  
Phone#: +39 051.811905 - +39 051.817162 Fax#: +39 051.811185

**commerciale@farmacare.it**  
**www.farmacare.it**

C.C.I.A.A. 339973 - ISCRIZIONE TRIBUNALE BOLOGNA 58744 PARTITA IVA 04076870379  
CERTIFIED COMPANY UNI EN ISO 13485:2016

Ed. November 2019

www.farmacare.it